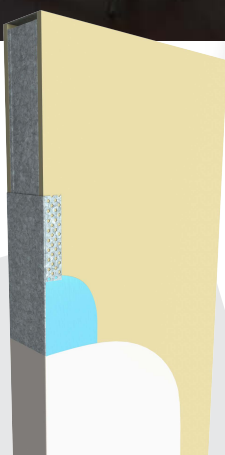




PRODUCT DATA SHEET

RONDO®

INSPIRE® ARCHITECTURAL PLASTERING BEADS



The Rondo INSPIRE® Architectural Plastering Beads range includes our End Cap and Reveal Beads for modern and flush finishes.

The NEW Rondo INSPIRE® End Cap is an efficient solution to cap internal partition wall ends, cavity slider doors, internal balustrades and window openings. It provides the strength required to protect the corners from impact and increase durability in areas with high traffic. Save time on-site with our effective, easy to install and economical solution that easily slides onto the ends of plasterboard for capping, removing the need for having to install two plastering beads.

ARCHITECTURAL FINISH / ZINCANNEAL STEEL / VARIOUS SIZES AVAILABLE

INSPIRE® END CAP BENEFITS

- Zincanneal® G2S steel for durability and resistance to the elements
- Reduced installation time by replacing two beads with one cap
- Reduced compound usage as a result of less joints
- Available in a range of different sizes to suit different stud sizes and wall configurations

INSPIRE® REVEAL BEAD ADVANTAGES

- Zincanneal® G2S steel for durability and resistance to the elements
- Quick and easy to install
- Perforated leg for setting into the surrounding wall lining and can be painted over to match the wall finish
- Available in a range of different widths

RONDO

STRUCTURAL DESIGN ACTIONS

STANDARDS & CODES	CEILING						WALL			ACCESSORIES	FINISHING SECTIONS		ACCESS PANELS	FASTENERS
	DUO	DONN	KEY-LOCK	XPRESS	WALK-ABOUT	STUD & TRACK	STUD & TRACK	MAXIFRAME	QUIET STUD	TOP HATS	EXANGLE	EXANGLE RT	PANTHER	CERT-R-FIX
ASTM C635/C635M-17 Standard Specification for Manufacture, Performance and Testing of Metal Suspension Systems for Acoustical Tile and Lay-in Panel Ceilings														
AS 3623:1993 Domestic metal framing														
AS/NZS 1657:2018 Fixed platforms, walkways, stairways & ladders. Design, construction & installation														
AS/NZS 1397:2021 Continuous hot-dip metallic coated steel sheet & strip - Coatings of zinc & zinc alloyed with aluminium & magnesium	*													
AS/NZS 1664.1:1997 Aluminium structures - Limit state design	●													
AS/NZS 1866:1997 Aluminium & aluminium alloys - Extruded rod, bar, solid & hollow shapes	●													
AS/NZS 2311:2017 Guide to the painting of buildings														
AS/NZS 2589:2017 Gypsum Linings - Application & finishing														

- * EXCLUDES ALUMINIUM
- APPLIES TO ALUMINIUM GRID ONLY
- REFER TO CERT-R-FIX MANUAL

For comprehensive design and installation guides please [click here](#) to access the **Rondo Professional Series**

MATERIAL SAFETY DATA INFORMATION

MATERIALS

Products manufactured by Rondo Building Services are produced from coated steel coil material which is classified as a non-hazardous material.

PRODUCTION PROCESSES

A water-based soluble lubricant is used to assist with the roll forming process. These soluble lubricants are not considered hazardous when used as recommended by the manufacturer.

HANDLING AND STORAGE

Products are supplied in pack and sub-pack quantities and should be handled in accordance with the recommendations contained in AS 1470 – Health and Safety at Work Principles and Practice.

Where mechanical lifting or moving equipment is required, trained, and licensed operators are to be used.

Metal products should be stored in an environmentally friendly area away from airborne contaminants such as acid and salt sprays.

SAFETY

It is our recommendation that PPE should be worn when handling metal products (AS 2161 –Occupational Protective Gloves) and that they should be checked regularly for damage.

People with sensitive skin conditions should seek medical advice before prolonged handling of metal products: hands should be washed before eating and for personal hygiene.

Safety glasses (AS/NZS 1336) should be worn when cutting metal sections.

SITE TRAINING

It is the responsibility of the contractor to ensure their employees are trained in onsite WHS procedures as these can vary from site to site.

COMBUSTIBILITY

For more information on the steel used by Rondo visit www.steel.com.au or [click here](#).



RONDO SUSTAINABILITY ADVANTAGE

PRODUCT DATA SHEET



For more information on the Rondo Sustainability Advantage [click here](#)

ENVIRONMENTAL PRODUCT DECLARATION (EPD)

The Rondo EPD provides to a customer the Life Cycle Assessment (LCA) data for over 300 products and 53 product families.

source the LCA data by selecting the required part numbers that make up the system within one EPD.

The Rondo EPD was certified, and made available to Rondo customers in December 2020, [click here](#) to download.

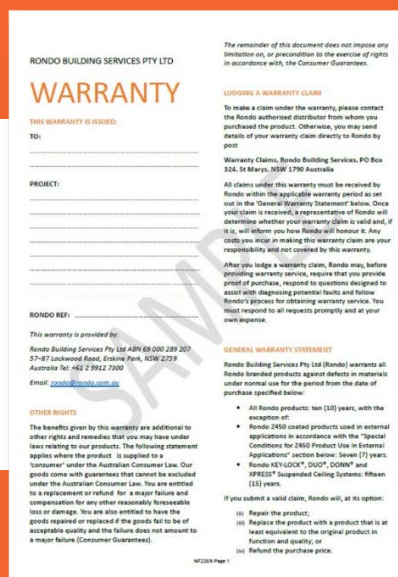


RONDO WARRANTY

Rondo's quality products are backed by our comprehensive warranty.

With minimal exclusions, our warranty provided optimal peace of mind.

For more information on our warranty [click here](#).



CERTIFICATIONS



RONDO