

new royal adelaide hospital adelaide



PROJECT SPOTLIGHT:

THE NEW ROYAL ADELAIDE HOSPITAL (nRAH) project is a significant one for Rondo, with our Engineering team providing extensive design support and innovative system solutions developed specifically for this project, over two and a half years prior to the commencement of construction.

Copious hours, team work and designs were provided to actively secure Builder, HYLIC Consortium (consisting of Hansen & Yuncken & Leighton contracting) to accept and use Rondo's new Seismic detailing and products, which are now a required specification for Hospitals with a 'Category 4' design.

Brighton Australia is the commercial contractor on site at nRAH, with approximately 150 workers currently listed, and an anticipated 250-300 workers to be recruited later this year, once the Project's construction restrictions have been lifted. Such restrictions include concrete formwork, which are a large and lengthy development due to the size of the project. Brighton have a team of supervisors, managers and admin staff who remain on site throughout the entire duration of the project to support and service the daily needs of nRAH.

(continued Page 2)

INSIDE THIS ISSUE:

- NEW RONDO PRODUCTS
- EYE FOR INNOVATION WINNER ANNOUNCED
- CHRISTCHURCH NZ OPERATIONS
- CHARLES PERKINS CENTRE, NSW
- BATAVIA APARTMENTS, WA
- IMMANUEL COLLEGE, SA
- COLLINS STREET APARTMENTS, VIC
- TOWNSVILLE HOSPITAL, QLD
- AUSTRALIAN EMBASSY, INDONESIA
- FOUR SEASONS HOTEL, MALAYSIA
- KAPSARC, SAUDI ARABIA, NOW OPEN

RONDO®

www.rondo.com.au

A Channel R Publication



NEW ROYAL ADELAIDE HOSPITAL *(continued from Page 1)*



Due to its 'Category 4' design requirements, the nRAH required Rondo to design and manufacture specifically for the project. Items such as Rondo's Slotted Seismic Deflection Head Track, special range of Head Jamb Brackets and Angles, plus Seismic Wall and Ceiling Angles, Trims and Brackets, have all been developed and reengineered for use on this massive project.

In fact, as of August 2014, the following Rondo Products have been supplied to nRAH, including the new products created/modified to suit design requirements and construction restrictions:

- **92mm x 0.55BMT Stud Rondo** has supplied 35,000 lengths to date
- **92mm x 0.75BMT Stud Rondo** has supplied 22,000 lengths to date,
- **92mm x 1.15BMT Stud Rondo** has supplied 5,000 lengths to date

- **92mm RQST Rondo** has supplied 17,500 lengths to date
- **92mm x 0.55BMT Bottom Track Rondo** has supplied 10,000 lengths to date,
- **92mm x 0.75BMT Slotted Seismic Track Rondo** has supplied 19,000 lengths to date.

Rondo have been working very closely with Brighton from the inception of this project, and as the Project still has over 2 years of development until its estimated 2016 completion date, it highlights just how relevant and significant Rondo products are to the projects construction. HYL Consortium have forecasted there is still a large supply and demand to be met in regards to ceiling design, as only a limited amount of Rondo Ceiling Systems have been supplied to this Project so far.

The New Royal Adelaide Hospital has been a driving force behind the development of Rondo's new Seismic range of Products, cultivating urgency for Hospital developments to incorporate Seismic Designs and paving the way for other Projects to understand the fundamentals of working with this System.



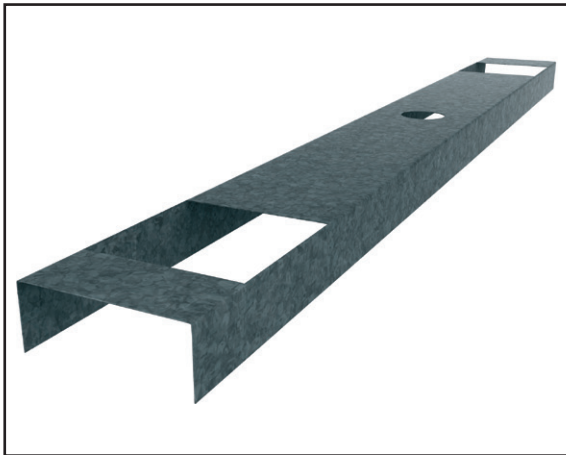
new products

NEW: MADE TO ORDER PRODUCTS JUST RELEASED

Rondo recently released two new products: the Double Punched Nogging Track and Speedpanel Track components 820 and 559, which have been added to the Rondo Pricebook, July 14 revision.

DOUBLE PUNCHED NOGGING TRACK

The Rondo Double Punched Nogging Track is an addition to the Steel Stud and Track system, designed for use with back to back stud framing as well as MAXIjamb® when used as a stud. Available for 76mm, 92mm and 150mm studs. Rondo has invested in the tooling to make it less expensive and easier to produce.



DOUBLE PUNCHED NOGGING TRACK

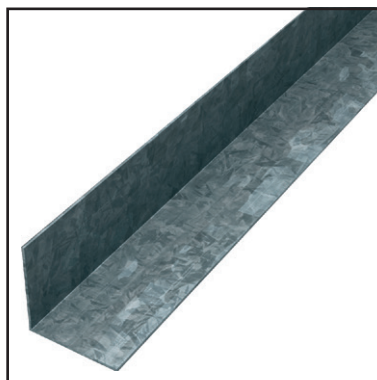
SPEEDPANEL TRACK COMPONENTS: RONDO 820 AND 559

Due to increasing customer demand, Rondo have (released) two components for use with the 78mm Speedpanel Track, both manufactured from Z275 Galvabond material.

Rondo 820 Speedpanel 'C' Channel is available in stock packs of 50pcs, with the 559 Speedpanel Angle available in 100pc stock packs. Rondo has the flexibility to quote to supply any special sized 'C' Channel or angle required for Speedpanel systems.



820 SPEEDPANEL TRACK



559 SPEEDPANEL ANGLE

Availability of these products is by order only and lead times apply. Please contact your local Rondo Technical Sales representative for further information.

new product

NEW: 238 SWIVEL CLIP

Rondo's recently released 238 Swivel Clip has been designed to allow Rondo 129 or 308 Furring Channel to be attached to the Top Cross Rail and angled in any direction. This offers Contractors flexibility during set out. Using existing components from Rondo's KEY-LOCK® Concealed Suspended Ceiling System range, the 238 Swivel Clip is a combination of Rondo's 237 Direct Fix Furring Channel Clip and 119 'U' Clip riveted together. The 238 Swivel clip has been tested to ensure it meets the Australian Standard for connection load capacity, and is a simple, cost-effective and multi-directional clip which offers contractors flexibility of grid set out in difficult situations.



238 SWIVEL CLIP

INSIDE THIS ISSUE:

SLC Loading System	4
Gold for Rondo in Annual Audit	5
KUC Turns 25	5
Eye for Innovation 2014 Winner	5
Christchurch NZ Manufacturing	8
Charles Perkins Centre, NSW	9
Harold Park Apartments, NSW	10
Mt Druitt Hospital, NSW	11
Batavia Apartments, WA	11
Edith Cowan University, WA	12
St John of God Hospital, WA	12
Immanuel College, SA	13
568-580 Collins Street, VIC	14
Array Apartments, VIC	14
University of Melbourne, VIC	15
The Milton, QLD	15
Hervey Bay High School, QLD	16
Mowbray Apartments, QLD	17
Townsville Hospital, QLD	17
Australian Embassy, Indonesia	18
Four Seasons Hotel, Malaysia	18
Blundstone Arena, TAS	19
KAPSARC, Saudi Arabia	19

TAKING EFFICIENCY TO A NEW LEVEL: RONDO'S INNOVATIVE SLC LOADING SYSTEM



Ignafuisi. Aciliqu amcommy niam, velessit nos nonse commy niam quisit nos dolum zzriustio dolortincil et eraesse estrud dolum et am dolent duis nulla feu feu facilluptat adionse quismolese tatin venim nullut dit num dolor sectem quat atummy nos enit, venim verillaorem dolesti nclilit lorercilit landrem vendipsustie mod dio dipis dolore do od duisit prat.

Since the introduction of our SLC Loading System back in 2009, we've taken our delivery service to the next level.

The distribution of Rondo products from our Erskine Park warehouse is now extremely efficient and innovative. Historically however, we found products were difficult to pack into shipping containers, and took a lengthy amount of time, because products were bundled together in packs with a variety of lengths. For this reason, Rondo introduced Seafreight Loading Chassis (SLC) packing, which was designed and patented by Container Loading Solutions International Pty Ltd (CLS).

SLC's are steel chasses with rollers that provide quick and easy loading/unloading of shipping containers. In making the change, Rondo has been able to minimise delay and maximise efficiency output, loading its products onto 20ft SLCs, securing the product with fitted load binders, and then using a 2.5 tonne forklift to push two, 11 tonne loads up a two metre container ramp directly into each 40ft container.

This means our highly skilled operators can load any one truck in two and half minutes utilising our scissor life table. This innovation has reduced lead times and damage to our products which has seen an increased satisfaction of our customers, both locally and internationally. Also importantly is the safety of our people as the freight can be loaded and secured without the need for personnel to enter the container.

To receive Rondo updates as they happen,
join Channel R at
www.rondo.com.au



update

2014 ANNUAL AUDIT: RONDO ACHIEVES GOLD



As a member of the Australian Steel Institute Environmental Sustainability Charter, Rondo's business operations are audited annually in terms of our environmental management.

Findings from our audit this year concluded that Rondo has 'a very

solid EMS culture, awareness and commitment' and that we are 'demonstrating best practice and well positioned to influence its supply chain as an industry leader'.

Due to our glowing assessment, Rondo was accredited with a "Gold" band achievement, which is a strong indication to the industry of our commitment to environmental performance and our leadership in this area.

update

KUC: KIDS UNDER COVER TURNS 25

This year, Rondo's not-for-profit partner, Kids Under Cover, will celebrate 25 years of hard-work and commitment, working to prevent youth homelessness and at risk young people.

In 2013 alone, Kids Under Cover completed 51 new Studio projects, offering both one and two bedroom, fully relocatable Studios constructed on the grounds of the family/carer's home, housing more than 2800 young people.

Rondo would like to congratulate Kids Under Cover on their 25th Anniversary and express our excitement about the next big project we are working on together...stay tuned for details in the coming months.

For more information about the great work Kids Under Cover do, visit www.kuc.org.au

update

EYE FOR INNOVATION: ANNOUNCING OUR 2014 WINNER

Rondo prides itself on being a leader in product innovation. Therefore, we recently called on our social media users to think 'outside the box' and come up with a compelling and innovative Idea for a new/modified Rondo product, or a new/improved service.



We were impressed with the results, receiving some creative and original ideas over the promotion period, with each entrant receiving a Rondo LED mini torch key-ring/bottle opener as appreciation for their efforts and support.

Rondo would like to especially thank Roland Mapa whose idea for a new Wall System captivated the Rondo team with something that we will be further discussing in our new products pipeline. Congratulations Roland, you are now the proud owner of a Rondo EXTREME Mountain Bike and Helmet valued at over \$1000 AUD.

Thank you to all participants of our Eye for Innovation promotion, and to those who missed out, join us on Facebook, Linked In, Twitter or YouTube for our next giveaway!





Every piece of our
Seismic Solution is designed to
work together.

And our market-leading Seismic Design Wizards play a very important part. Not only are Rondo Seismic Wall and Ceiling Systems backed by the superior seismic design service offered by our experienced Engineers, but now our Seismic Design Wizards are available online, any time, to make it even easier for you.

Simply by inputting your project-specific information, Rondo's Seismic Wizards can automatically calculate seismic ceiling designs using the Rondo seismic details and will determine whether bracing is necessary or not.

It's an extremely helpful tool for Contractors tendering on projects with seismic requirements and needing to work out costs.

Extensively designed and tested, Rondo Seismic Design Wizards meet the code requirements for both Australia and New Zealand, and the features include building data input, building geometry input, lining weights input, service loads input, KEY-LOCK® and DUO® framing input, automated vertical capacity check, automated seismic weight and seismic force calculations. So to spell it out: once you have completed a calculation, you can simply print out your results, email them to yourself, or submit them to Rondo for further technical assistance.

**Register now and discover
an easier way to design your
seismic systems at
www.rondo.com.au/seismic**



RONDO®
www.rondo.com.au/seismic

NEW ZEALAND: NEW MANUFACTURING FACILITY OPENS IN CHRISTCHURCH



Christchurch has an estimated forty billion dollar price tag on the rebuild of its city, with activity predominately in the residential and health sectors starting to gain momentum towards the end of 2014. Rondo customers will be heavily involved in the rebuild, and therefore Rondo has opened a second manufacturing facility in Christchurch to be able to deliver our products to customers faster and provide onsite technical support.

With insurance companies still very nervous about seismic activity in the region there was very limited supply in finding a 100% compliant rating building to the New Building Standard. However, Rondo was successful in securing a 4000m² compliant property located approximately 10km from the city centre and within a short drive from all the major arterial routes around the city.

Rondo's Christchurch operation has a similar set up to our manufacturing facility in Auckland, with two machines producing products specifically to support customers in the South Island, New Zealand market. Machines arrived at our Christchurch facility in July, and the site has been up and running from September 1, 2014.

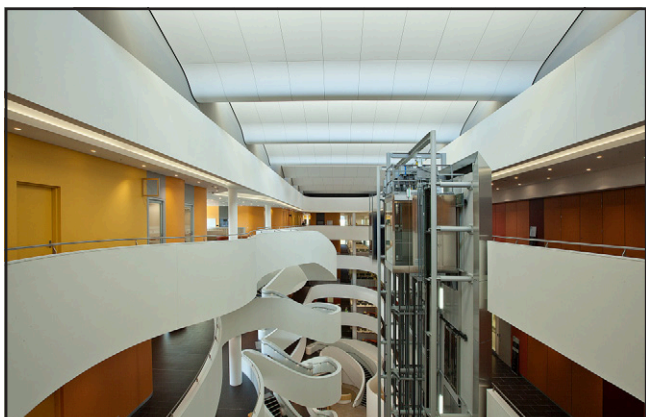
Rondo's Christchurch site is staffed by machine operators/store personal, as well as a Business Development Manager for the South Island who will be readily on hand to service the region and provide technical assistance. All clerical and administration services will continue to be managed at our Auckland office.

Not only has Rondo opened a manufacturing facility to offer additional support to our South Island customers, but in response to projects having seismic requirements there and elsewhere, Rondo has developed superior seismic wall and ceiling systems which can be tailored specifically to suit each project. Rondo's market-leading seismic designs have been developed through the use of Australian and New Zealand Standards, comprehensive in-house and third party testing, and extensive research into the latest seismic developments.

Both the opening of Rondo Christchurch and the launch of our Seismic Systems have taken place during our 50th Anniversary, which is testament to our continued focus for offering industry leading systems solutions which are complimented by outstanding customer service.



PROJECT NEWS: CHARLES PERKINS CENTRE, NSW

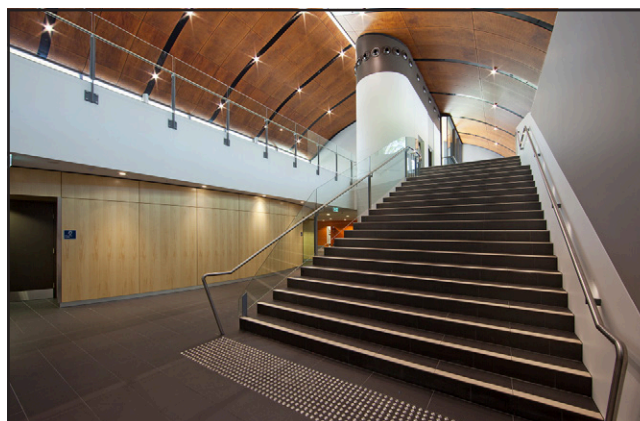


Completed ahead of schedule and in time for the 2014 academic year, Brookfield Multiplex enlisted Cubic Interiors expertise to assist in the design and delivery of the world-class \$220 million Charles Perkins Centre; a major University of Sydney initiative with 46,700 square metres of research and education space.

Rondo worked alongside Cubic Interiors, and Builder, Brookfield Multiplex, who were chosen due to their ability to deliver highly innovative and cost effective design solutions. This was achieved through the use of Rondo's KEY-LOCK® Concealed Suspended Ceiling System and Steel Stud and Track. Rondo provided continual assistance by coordinating the product logistics and helping Cubic Interiors with the design criteria.

There were several design issues to overcome, notably with the curved walls, shelf load to walls and detailing ceiling systems, plasterboard and joinery; which is where the Rondo Technical team brought significant benefits to the project, facilitating the design for the high curved walls, and using Rondo Steel Stud and Track as balustrades on all levels and walls to accommodate services within the rooms.

With minimal interruption for staff and students, the Charles Perkins Centre has been completed, delivering a world class research and education facility within an active and operating university campus.



PROJECT NEWS: HAROLD PARK, NSW



Contemporary, convenient and close to Sydney's CBD, yet secluded by parks and water, lays Harold Park which is a future residential precinct in the heart of Glebe, developed by Mirvac, one of Australia's premier developers of residential apartments. Throughout the construction of Sydney's Harold Park, Rondo has been supplying top-performing

systems to Brighton Australia for stage one and Alkon Constructions for stage two.

Rondo has provided MAXIframe® External Wall Framing System, Steel Stud & Track, KEY-LOCK® Concealed Suspended Ceiling System and EXANGLE® Finishing Sections, which have used extensively in the design and development of Stages one and two in the six-stage series.

Rondo will continue to provide exceptional design support for the future stages, working in-conjunction with the contractors nominated by Mirvac for the final stages.

Stay tuned for further updates as the site continues to develop. Estimated Project completion date is 2017.

project

PROJECT NEWS: MT DRUITT HOSPITAL, NSW



The Mt Druitt Hospital (MDH) redevelopment project will increase capacity to meet significant local demand and deliver expanded user group areas. Builder, Kane Constructions has enlisted the skills of contractor Icon Commercial Projects, who is installing Rondo Steel Stud on the interior and exterior of the MDH building, KEY-LOCK® Concealed Suspended Ceiling systems (including bulkhead designs) in the Medical Imaging Department and throughout the new main entry for the hospital.

Estimated project value is \$250M - \$500M, with \$296M donated by the NSW Government, and a further \$28M donated by the Australian Government for the new Mental Health Unit.

In the second stage of Redevelopment, the MDH Project will expand the current CSSD facility, to cater for increased capacity; refurbish key rooms in the Medical Imaging department; construct a new main entry to the MDH with extensive refurbishment of the current facilities within a live environment; and extend and refurbish the current Sub Acute Facility to greatly improve the delivery of services.

The MDH is expected to be completed in late 2016.



project

PROJECT NEWS: BATAVIA APARTMENTS, WA



The recently developed Batavia Apartments are located just 5 hours' drive from Perth, in the city of Geraldton, alongside the Batavia Marina. The Apartments are environmentally sensitive in design and offer 25 luxury residential apartments, 25 short stay apartments and 4 commercial tenancies.

The estimated project value is \$28 million, with Rondos responsibilities rapidly evolving around the wall and ceiling contract. Geraldton Independent Building Supplies Contracting Arm (GIBS) alongside Zuideveld Marchant Hur Architects (ZMH), contracted Rondo to provide top performing system solutions that are competitively priced. This was achieved by tracking which Rondo products were purchased and the total value purchased throughout the duration of the Project.

Using Rondo's 64mm and 92mm x 0.50BMT Steel Stud and Track, KEY-LOCK® Concealed Suspended Ceiling System, Resilient Mounts, EXANGLE® Finishing Sections and SRAP Panels, Crothers Construction resolved logistic problems, and were able to organise a localised distribution channel to source the required Rondo products.

The Batavia Apartments are a recent success story for Western Australia, having been completed in March 2013, they are defined by Architect ZMH's as 'collaborative focus and innovative designs'.



project

PROJECT NEWS: EDITH COWAN UNIVERSITY (ECU), WA



Construction is well underway on Building 34, with the \$2.7 million building program set to transfer the ECU Joondalup Campus into an innovative, active space for university life.

PACT Construction has enlisted Rondo to supply the project with both wall and ceiling systems. Top End Ceilings, JCY Architects and Urban Designers worked together to transform ECU into a state-of-the-art technology hub, with access to all student facilities together under one roof, increasing the vibrancy of the campus and to further complement the existing architecture.

Rondo was able to significantly benefit the project by storing and transporting products quickly from our local warehouse in WA. Rondo's responsibility was focused on the internal fit out of the new teaching block, continuing JCY Architects and Urban Designers plan to draw in natural light on all 5 floors of the building, whilst remaining connected and engaging with all external areas.

The following Rondo Systems were selected for use in the Project; 64mm and 76mm x 0.55BMT and 92mm x 0.55BMT and 1.15BMT Stud and Track, KEY-LOCK® Concealed Suspended Ceiling System, QUIET STUD® Acoustic Wall System, Shaftwall One-Way Erected System and EXANGLE® Finishing Sections; P01, P07, P05, P50 and P27.

The ability to provide Shaftwall One-Way Erected Systems and QUIET STUD® Acoustic Wall Systems to this project was essential to the Project's timely construction.

project

PROJECT NEWS: ST JOHN OF GOD HOSPITAL, WA

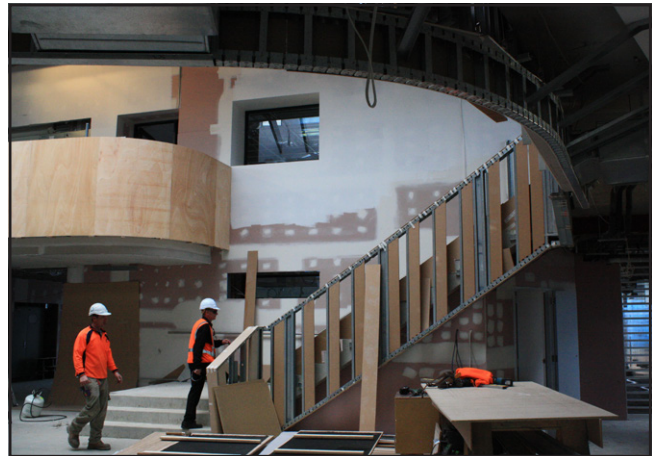


The St. John of God Hospital redevelopment at Murdoch comprises of several planned stages, which will see the Hospital's capacity increase from 363 to 537 beds and include new treatment facilities including 8 operating theatres, and an expanded medical clinic and cancer clinic that will allow an additional 25,000 patients to be treated each year.

Rondo provided technical support throughout the project, suggesting the use of MAXIjamb® as a quicker installation solution than boxed studs around the door jambs, and the use of Speed Channel Track around all Elevator shafts. Rondo 92mm x 0.75BMT Stud and Track, DUO® Exposed Grid Ceiling System, KEY-LOCK® Concealed Suspended Ceiling System and Access Panels were also supplied.

Brookfield Multiplex together with Nuceil and Silver Thomas Hanley Architects have an estimated \$150 million resource capacity to finish St. John of God Hospital's New South Wing by late December 2014, and they are right on track to doing so.

PROJECT NEWS:
IMMANUEL COLLEGE, SA



Immanuel College is an exclusive private school in Novar Gardens, Adelaide, and is currently undergoing \$15 million Redevelopments to its college campus, introducing a new building block that will be beneficial to all students, staff and families in the community.

Eight months into construction, Rondo have worked closely with long-time customer and Contractor S&S Plasterboard, providing extensive support including weekly site visits to solve any onsite issues, benefiting Builder, Sarah Constructions Pty Ltd, through detailed and continual technical assistance. S&S Plasterboard have worked meticulously with

Rondo and Architect, Swanbury Penglase, to redesign bulkheads to cater for structural steel beams. The new building block for Immanuel College presented difficulties as the building is two storeys and has sweeping bulkheads throughout with radius stairwells.

Rondo supplied KEY-LOCK® Concealed Suspended Ceiling System, Steel Stud and Track, Rondo Flexi Track and DUO® Exposed Grid Ceiling System to the project so far. There is still five months until the new facility is complete, and Rondo will continue to provide design support and weekly site-visits until its completion.

project

PROJECT NEWS: 568-580 COLLINS STREET, VIC



What will be one of the tallest towers to grace the Melbourne CBD when completed in February 2015, the 568-580 Collins Street Apartments offer first class amenities, including an entertainment room and business centre as well as studio, one and two bedroom apartments.

Hickory and Easy Contractors have worked together with Bruce Henderson Architects, enlisting the design expertise from Rondo's Engineering team, whose design work was carried out prior to commencement of construction, with special designs adapted for high wind loads of all the internal walls.

Rondo's comprehensive internal wall and ceiling designs provided throughout the design of this project ensured they successfully won the job, with Hickory selecting 64mm x 0.50BMT and 92mm x 0.55BMT Stud and Track Systems, KEY-LOCK® Concealed Suspended Ceiling Systems and Rondo PANTHER® Fire Rated Access Panels to use throughout the project.

This Project is due to be completed in February 2015.

project

PROJECT NEWS: ARRAY APARTMENTS, VIC



"Like a precious jewel, the shape of the building, its sheer glazed vertical walls and the array of reflective balustrades create a unique character that informed its name" **Julian Venning**, Design Director for Mirvac.

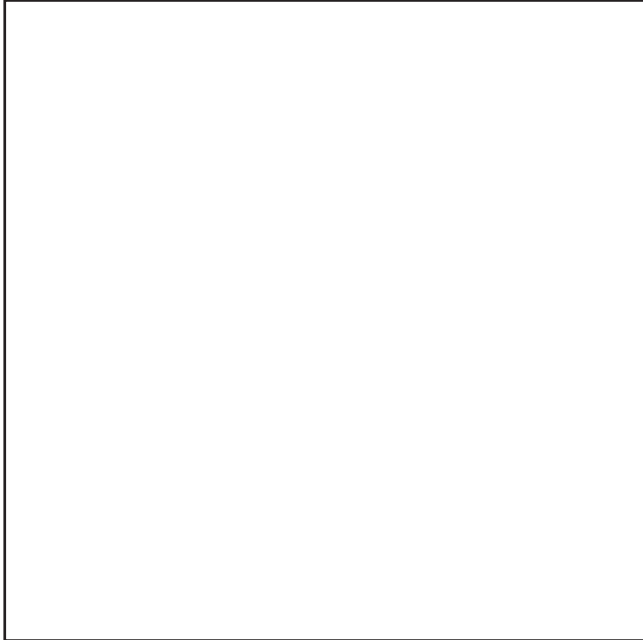
The 205 one, two and three bedroom apartments are situated in the heart of the Docklands, on the North facing banks of the Yarra River. Array Apartments boast exquisite facilities including a community centre, retail tenancies and a gymnasium.

City Projects are the Contractor on site, and have expanded their business from their NSW location to Victoria. Since being on site, City Projects have managed to help get the end date of the project brought closer than the anticipated June 2016 forecast.

Rondo significantly benefited this project by offering multiple site inspections and forward planning with City Projects and Mirvac to ensure what and when deliveries are needed to be out on site. Rondo 64mm x 0.55BMT and 64mm x 0.75BMT Stud and Track, 28mm and 16mm Furring Channel and A239 clips were used on this project, with special mention to the Rondo Engineering team whose expertise were required around the design and specifications of Rondo Bulkheads.

project

PROJECT NEWS: UNIVERSITY OF MELBOURNE, VIC



The University of Melbourne's latest extension is unique to the Uni as the Architecture students worked hard with many people to craft the design of the Faculty of Architecture building.

The Faculty of Architecture, Building and Planning is Australia's leading educational centre in the built environment and the unique design will allow students and staff to see the activities and vibrancy in a studio environment, which was recognised as a 'fundamental aspect of teaching'.

Rondo was tasked to design and supply 92mm 1.15BMT Stud and Track for walls that were 4.8 to 6 metres in height and 150mm x 0.75BMT Stud and Track for walls at a huge 9 metres high. Rondo's KEY-LOCK® Concealed Suspended Ceiling System was installed to hold plasterboard and decorative panels, which required expert design and technical support by Rondo Engineers as the specifications of the lecture theatre's ceiling comprised of multiple layers and the weight needed to be supported by our ceiling system. Rondo's ability to provide a solution benefited the builder Multiplex, and Contractors Express Interiors and Nadaa Inc.

Rondo is continuing to provide regular site inspections, design support assistance, with the \$99 Million extension due to be completed in December 2014.

project

PROJECT NEWS: THE MILTON, QLD



This project is a prime example of how technical support can improve your output. The Milton is a \$210 million 32 story apartment building, consisting of 298 one and two bedroom units. Its Brisbane CBD location means it's central to the city, iconic Suncorp stadium and the Brisbane river.

Initially, Rondo's Staggered Stud System was specified, however, Rondo QUIET STUD® Acoustic Wall System was proposed to Hutchinson Builders, who were really impressed and changed the original project design. Approximately 19.725 lineal metres of Rondo's QUIET STUD® Acoustic Wall System will be used on the entire project.

Rondo was accountable for the Internal walls and ceilings, as well as the external soffits. Continuing to provide design and quality expertise, Rondo is currently producing special length Studs to assist the contractors, Scooter Commercial, on site, with approx. 53,000 lineal metres of light gauge 64mm Stud required for this project.

Use of the QUIET STUD® Acoustic Wall System was a huge benefit and cost saving option for this project, as the system is much easier and quicker to install. The Milton is estimated to be completed in December 2014.

PROJECT NEWS: HERVEY BAY STATE HIGH SCHOOL, QLD



When construction began earlier this year in June, Hutchinson Builders set out to create a facility that would directly benefit Hervey Bay High School (HBHS) and the community.

Teaming up with Contractor Knights Plastering and Architect Cobie Group Builders, Rondo's engineers were able to provide extensive design support, including a solution for high regional wind loads and raking external walls. Rondo's 90mm and 150mm 1.15bmt Studs, 150mm Slotted Deflection Head Track, Top Hat, KEY-LOCK® Concealed Suspended Ceiling System and DUO® Exposed Grid Ceiling System were used throughout the construction of this facility.

Once completed, HBHS will have the capacity to hold indoor sporting events for the community, alongside its first objective, providing a physical educational facility for the children.

Estimated completion is Oct 2014.

project

PROJECT NEWS: MOWBRAY APARTMENTS, QLD



Offering unrestricted and breathtaking panoramic views of East Brisbane city and river, Mowbray Apartments' private rooftop terrace makes a real impression. \$12.5 Million has been put into this project, which offers prospective residents 56 one and two bedroom apartments to choose from, in what CMF Projects has coined, the 'architecturally inspired nine story building'.

Working with Contractor Cree8 and Architect McVeigh Consultants, Rondo has provided Stud and Track for internal and external wall framing, Resilient Mounts between one and two bedroom tenancies for reducing sound, Furring Channel for wall linings and KEY-LOCK® Concealed Suspended Ceiling System throughout.

The main issues CMF Projects ascertained through the development of this Project included the packing and delivering of orders in unit lots. Rondo managed to work alongside our partner to pack our products into Unit lots for ease of access and transport. This fast response resulted in a positive benefit to the construction site and initial product order.

Completion date for the brand new Mowbray Apartments is scheduled for November 2014.

project

PROJECT NEWS: TOWNSVILLE HOSPITAL, QLD



Progress has started on the Townsville Hospital Redevelopment (THR), with Stages 3 & 4 secured by Builder Thiess Pty Ltd and NWCI QLD.

The THR consists of construction of the South Block Ward Building, Cancer Centre, Pathology Lab expansion, Clinical Services and Support Building, along with an additional central energy facility.

Rondo has provided a total of six full semi-loads into this Project, mainly consisting of 92mm x 0.75BMT Stud & Track, Shaftwall One-Way Erected System, KEY-LOCK® Concealed Suspended Ceiling System and Top Hats.

Extensive designs and shop drawings were required for the initial design of the project, and have taken further shape throughout the construction. Rondo's Technical Services Department were depended on extensively, to ensure the project kept on schedule.

Brett Ford and his team from NWCI have a very difficult task ensuring this project will be completed on time and of an outstanding quality, and they should be commended for their efforts. This brought forward the expected completion date to early September, 2014.

PROJECT NEWS: AUSTRALIAN EMBASSY, INDONESIA



After a year of providing extensive Technical expertise and design services, Rondo Malaysia was successful in securing the tender for the Australian Embassy project in Jakarta, Indonesia.

Leighton Holdings has been contracted to the \$230 million Project, building the Australian Embassy as a joint venture with the Department of Foreign Affairs and Trade and Denton Corker Marshall Architecture and Urban Design.

Rondo immediately began supplying Products the project, including Steel Stud and Track and KEY-LOCK® Concealed Suspended Ceiling System, which have been used in the 'super structure' stage of the 40,500 square metre project. Rondo was chosen as a supplier to the project due to our support throughout the tender stage and our ability to provide Leighton Holdings with a total solution package, enlisting help and resources from USG Boral, James Hardie and Rockwool.

At the peak of the project, it is estimated that approx. 800 local workers will be on-site, providing a fundamental and integral boost to the community and employment. The design of the project emphasises the need for environmental awareness, security and safety.

With an immediate start to the Project, it is estimated the Australian Embassy will be up and running in Jakarta by mid-2015 and will truly be an iconic landmark and relationship for Indonesia and the greater Australasia.

PROJECT NEWS: FOUR SEASONS HOTEL, MALAYSIA



With construction on the Basement recently completed, Contractor CRCC Malaysia Berhad have begun work on the Frame of the Four Seasons Hotel in Kuala Lumpur. Developer Venus Assets Sdn. Bhd. And NRY Architects Sdn. Bhd. are working together on this RM\$2.5 Billion Project, to increase productivity and engagement for visitors in this area.

Construction initially began in 2008, however due to design changes and remodelling, lengthy delays ensued. The Four Seasons Hotel when complete will be the world Tallest Four Seasons Skyscraper, with 65 story's of residential apartments and commercial blocks, comprising of retail, tenancy and hotel facilities.

Rondo have provided Steel Stud and Track and QUIET STUD® Acoustic Wall System to the Project, to date, anticipating further to supply further Products and support throughout construction. The Project is now estimated to be completed in late 2017.

Stay tuned for Part 2.

PROJECT NEWS: BLUNDSTONE ARENA, TAS



Formally Bellerive Oval, the Blundstone Arena is currently undergoing an upgrade that incorporates a new Western grandstand, holding in excess of 5000 people, a fully refurbished indoor practice centre, brand new office complexes, change room facilities and an upgrade to the player spectator area up to ICC standards.

The redevelopment of the Blundstone Arena has proved to be rather difficult and restricted, as the oval is in regular use. The significance Rondo provided to this project was that we were able to offer competitive pricing and Voss Constructions & Joinery PTY LTD and Brock Plaster Contracting were already familiar with Rondo systems. Rondo's Flexi Track and Bulkheads were used in the

refurbishment and design of the high walls in the Arena. Rondo's 1.15mm x 0.75BMT Steel Stud and Track, KEY-LOCK® Concealed Suspended Ceiling System, DUO® Exposed Grid Ceiling System, PANTHER® Access Panels were also used throughout the redevelopment.

The Rondo Engineering department, with the help of the Voss Constructions & Joinery crew, worked together quickly and efficiently to get the job done. The redevelopment will benefit the Tasmanian community, and all sports fans alike, bringing the ground into the new age of sporting arenas. Estimated project value for this redevelopment is \$30 million and should be completed early February 2015.

NOW OPEN: KAPSARC, AN ICONIC RESEARCH CENTRE



The unparalleled structure of The King Abdullah Petroleum Studies and Research Centre (KAPSARC) located in Riyadh, Saudi Arabia, opened to the public in February 2014, already prized as an iconic feature in the city's landscape.

The October 2012 edition of Rondo insideR detailed our supply of Rondo Steel Stud and Track to the building's structure in the early stages and during the remaining stages of construction, Rondo supplied our Shaftwall One-Way Erected System, working alongside Developer Aramco and Contractor Drake and Scull.

Rondo also provided extensive design support to Zaha Hadid Architects, to ensure all design requirements and restrictions were met. The designs were required to have a special emphasis on sustainability in order for the \$2.5 million project being able to achieve its goal of the prestigious LEED platinum certification.

The Rondo Malaysia team who work tirelessly on this project were very excited to see the results of their efforts and product supply, with the Centre designed to bring cultures and communities together through dedicated research and holistic methodology.



1964



2014

Some things will never change...

Although the technology may have changed over the last fifty years, the standard of our technical expertise and service to customers never has.

That's why we have been involved in some of the largest projects here in New Zealand and worldwide, and it is our expert technical advice that has made us a market leader.

And we plan to keep on delivering that standard for the *next* fifty years.

Now that's something to celebrate.

TECHNICAL
EXPERTISE

FIFTIETH **50** ANNIVERSARY

RONDO[®]

www.rondo.co.nz

CUSTOMER SERVICE HOTLINE: 0800-0800-RONDO
(0800-0800-76)